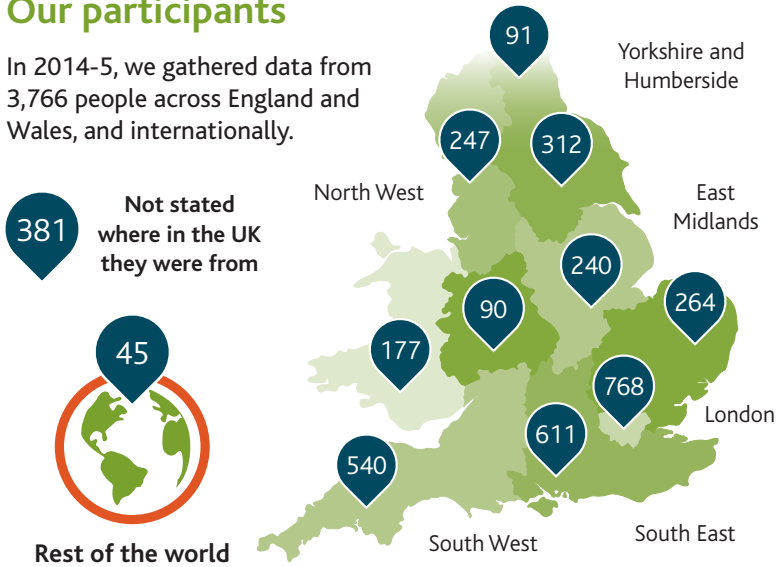


The McPin Foundation is a mental health research charity. We champion experts by experience in research so that people's mental health is improved in communities everywhere. We deliver high quality user focused mental health research and evaluations. We support and help to shape the research of others, often advising on patient and public involvement strategies. We work to ensure research achieves positive change. Find out more about us at www.mcpin.org, contact@mcpin.org, or follow us on twitter @McPinFoundation

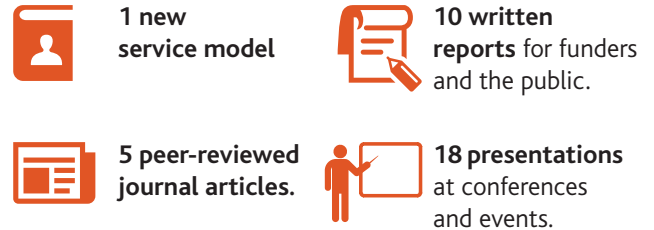
Our participants

In 2014-5, we gathered data from 3,766 people across England and Wales, and internationally.



Our reporting

We have been reporting our findings in various ways and to different audiences.



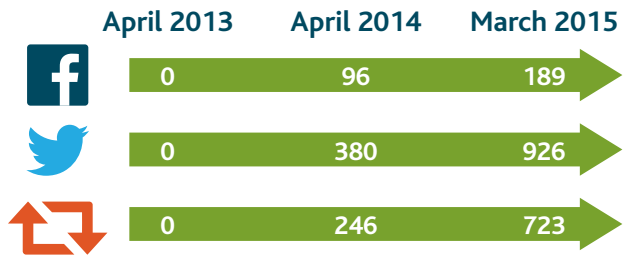
Our team

In 2014-5 we continued to grow. We have extended our core team to 11 staff members and employed 84 people with first hand experience of mental health problems to undertake and advise us on our research.



Our social media

We started using Facebook and Twitter to communicate directly with the public and begin to recruit supporters.



Our new and developing projects

In 2014-5, the McPin Foundation was involved in developing new proposals to secure funding and starting new research projects. We raised £498,847 in project grants.



We developed and sought funding for 24 different project proposals.



We secured funding and started set-up for 13 of those projects.



We have started collecting data or completed the project for 8 of those.

Our involvement panels

We set up Lived Experience Advisory Panels (LEAPs) for study teams.



Our partners and commissioners

Across our projects:



6 public sector organisations: NHS England, Public Health England Various Trusts and local authorities



9 voluntary sector organisations: Mind, Rethink Mental Illness, Centre for Mental Health, MQ, Birth Companions and The Stanley Foundation



20 academic partners including: Universities of York, Oxford, Cambridge, St George's (London), Birmingham, Plymouth, Sheffield, Manchester.